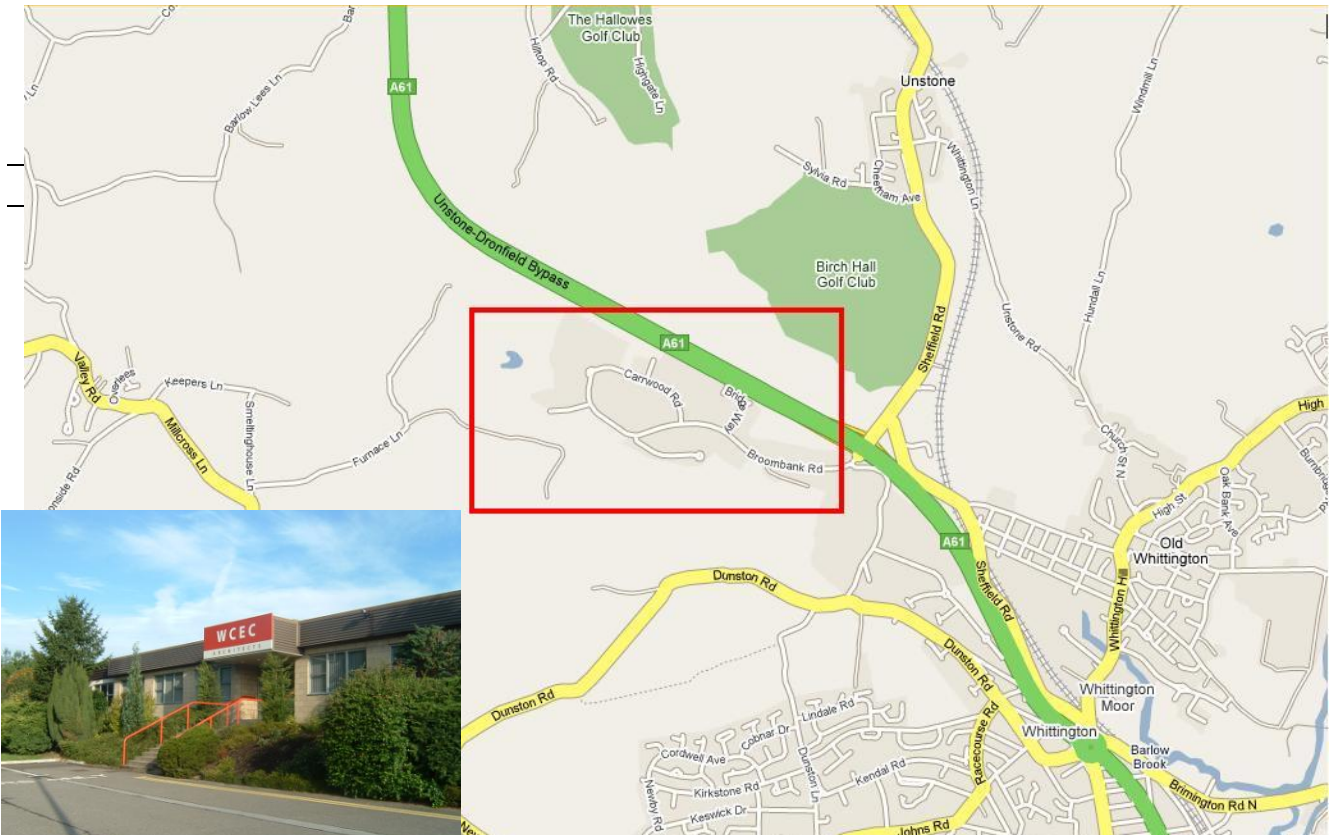




WCEC Architects
Carwood Court
Carwood Road
Chesterfield S41 9QB

Tel: 01246 260261
Fax: 01246 260736
Email: email@wcec.co.uk
www.wcec.co.uk



From The North

- Exit M1 at junction 33, onto the A630 (Sheffield parkway)
- Take the 3rd slip road and follow signs for Mosborough, Ring Road and Services.
- At the next roundabout continue straight on. At the next roundabout turn left following signs for Chesterfield (A61), Ring Rd sign. Follow (A61) signs through a number of traffic lights and roundabouts for approx 4.5 miles.
- At the "Meadowhead Roundabout" turn left onto the A61 following signs for Chesterfield.
- At next roundabout. Exit the A61 at the next slip road signposted Chesterfield Trading Estate Sheepbridge. Turn right at the bottom of the slip road. Follow the road for approx 1 mile. The office is set back from Carrwood Road, look for a large pair of red gates on the left hand side.

From The South

- Exit the M1 at Junction 29, following signs the signs to Chesterfield (A617) along the dual carriageway.
- At the roundabout, turn right onto the A61 towards Sheffield.
- Straight on at the next 2 roundabouts following signs for A61. Just after you clear the last roundabout (little Chef on right hand side), Look for left turning off A61 signed Dronfield/Unstone.
- Turn left at the bottom of the slip road. Follow the road for approx 1 mile. The office is set back from Carrwood Road, look for a large pair of red gates on the left hand side.

